



# BITimpex Anstalt LTD

## Wood Catalogue







# About us

## Partners' trust, consumers' recognition!

Company BITimpex Anstalt LTD, was founded in 2006 for the purpose of export softwood and hardwood (pine, spruce, fir, beech, oak, ash, birch, horn beech) logs and timbers. We export the different range of products, such as board, timber, blanks for euro-pallets (pallets), logs; balances for the pulp industry; veneer logs; technical raw material for particleboard, medium density fiberboard, laminated board; raw materials for the manufacture of plywood. Our company has been exporting timber to Europe, Africa, Asia and the Middle East.

Our company takes its rightful place in Europe among the logging and wood processing enterprises, has many years of worldwide experience in the processing and sale of wood products.

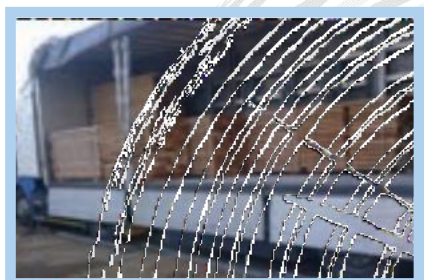
Sawmill and drying equipment complex allows us to take into processing 10 000 m<sup>3</sup> of round softwood and hardwood timber monthly. The logs are conversed on a new gang and tape equipment with the capacity of 400 m<sup>3</sup> of sawn timber edging shift. The equipment allows to produce timber of correct geometry eliminates the waviness, fringe.

The company also has its own packaging department; drying compartment with household and technical facilities; finished products warehouse; high-tech equipment for sawing, sorting of timber; manipulators for log feeding and transportation; drying chambers; energy capacity. Wood equipment is constantly updated.

We produce high-grade export quality timber on the modern equipment that gives the minimal amount of waste, which allows us to keep the price level for the timber at a low level, despite the highest quality of products. All the exported products comply with the international and European standards of quality, certified and ISO-9001. BITimpex Anstalt LTD has the certificates for the entire range of timber.

During its existence, the company organized the transportation by sea, rail or road, sometimes container transportation. The literate professionals work in the team of our company who constantly improve their knowledge and skills. Realizing that in today's rapidly changing business world, portability is important, we are actively developing new markets and distribution ways. Our company continually strives for excellence and is open to cooperation.

## SAWMILL







# Oak

Oak has high hardness and strength, the ability to bend. Oak has a beautiful color and texture. It is used for furniture and flooring, veneer, plywood, particle board. Also oak is used for mosaics and large thread.





# OAK LOGS



Carpathian Oak Logs · ISO



Oak Blocks ISO ·



Oak Grade A · SGS



Oak Grade A · SGS



Oak Grade A · SGS



Oak Grade A ISO · SGS



Oak Grade A · SGS



Oak Grade A ISO · SGS



Oak Grade A-B · SGS



Oak Grade A-B ISO · SGS



Oak white, yellow  
Grade A-B ISO ·



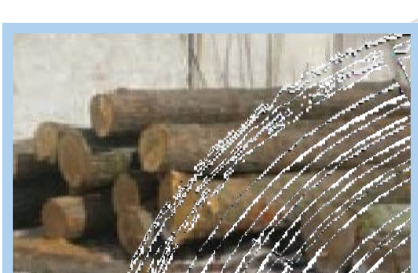
Oak Grade B-C ISO ·



Oak Grade C ISO ·



OAK Grade 1 · ISO



Oak Grade 2 890 · SGS



## OAK LOGS · SGS



Oak Logs · SGS



Oak Logs · SGS



Oak Logs · SGS



Oak Logs · SGS



Oak Logs · SGS



Oak Logs · SGS

## OAK LOGS ISO · SGS



Oak Logs ISO · SGS



Oak Logs ISO · SGS



Oak Logs ISO · SGS



Oak Logs ISO · SGS



Oak Logs ISO · SGS



Oak Logs ISO · SGS



Oak Logs ISO · SGS



Oak Logs ISO · SGS



Oak Logs ISO · SGS



## OAK PELLER LOGS



Oak Peeler Logs ISO ·



Oak Peeler Logs ISO ·



Oak Peeler Logs ISO ·



Oak Peeler Logs ISO ·



Oak Peeler Logs ISO ·



Oak Peeler Logs ISO ·



Oak Peeler Logs ISO ·



Oak Peeler Logs ISO ·



Oak Peeler Logs ISO ·



Oak Peeler Logs ISO ·



Oak Peeler Logs ISO ·



Oak Peeler Logs ISO ·

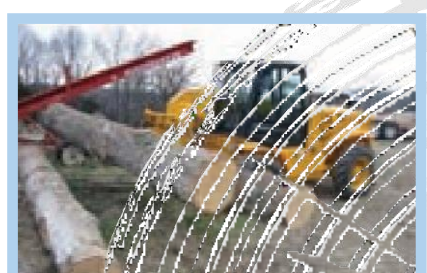
## WHITE OAK



White Oak · SGS



White, Red Oak Logs ISO ·



White Oak Logs ISO ·





White Oak Logs Grade A  
ISO ·



White Oak Logs Grade A  
ISO ·



White Oak Logs Grade A-B-C  
ISO ·



White Oak Logs Grade B-C  
ISO ·



White Oak Logs Grade B-C  
ISO ·



White Oak Logs ISO ·



White Oak Logs ISO ·



White Oak Logs ISO ·



White Oak Logs ISO ·



White Oak Logs ISO ·



White Oak Logs ISO ·



White Oak Logs ISO ·



White Oak Peller Logs ISO ·



White Oak Peller Logs ISO ·



White Oak Peller Logs ISO ·



## RED OAK



Red Oak Logs Grade A-B ISO ·



Red Oak Logs length 6m ISO ·



Red Oak Logs ISO ·



Red Oak Peller Logs ISO ·



Red Oak Peller Logs ISO ·



Red Oak Peller Logs ISO ·



Red Oak Peller Logs ISO ·



Red Oak Veneer ISO ·

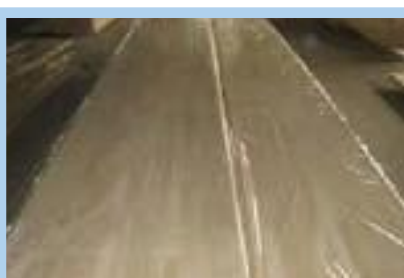


Oak Logs

## OAK TIMBER AND PLYWOOD



Humidity Measurement · SGS



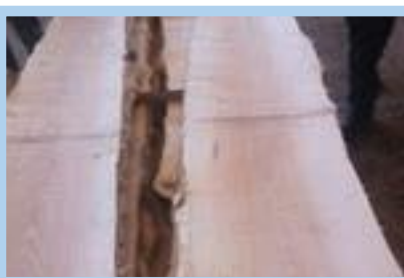
Grade 0 Length 4m · SGS



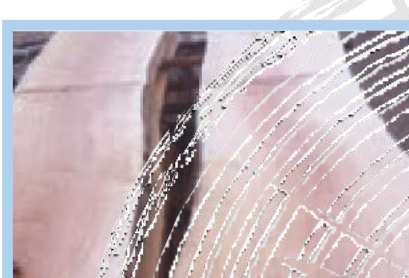
Oak Bricks 350x350 · ISO



Oak Timber ISO ·



Oak Timber



Oak Timber





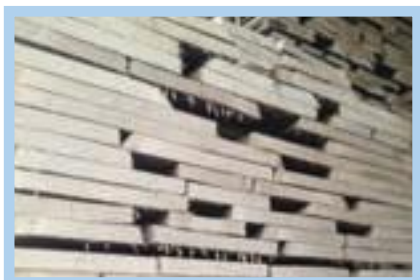
Oak Brick Length 4m · ISO



Oak Plywood ISO ·



Oak Plywood ISO ·



Oak Plywood SGS ·



Oak Plywood SGS ·



Oak Timber Grade A ISO ·



Oak Timber Grade B-C SGS ·



Oak Timber Grade 1 ISO ·



Oak Timber KD 9-11% ISO ·



Oak Timber ISO ·



Oak Timber ISO ·



Oak Timber ISO ·



White Oak Timber ISO ·



White Oak Timber ISO ·





# Acacia

Acacia is hardwood. It is usually used in the furniture production, not cracking, warping, elastic well polished. It is also used for the manufacture of blocks, planning tools, screws, sliced veneer and also for mosaic.



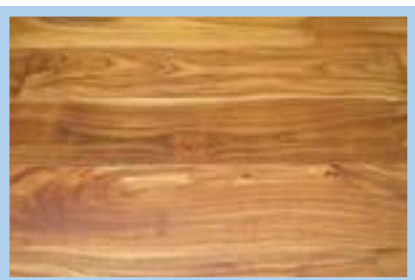
Acacia timber · ISO



Acacia timber · ISO



Acacia timber · ISO



Acacia timber · ISO





# Birch

Birch is mainly used for the manufacture of plywood and used for the manufacture of veneer sheets in the furniture industry and joinery. Production of parquet, particle board, plastic. It is easily processed, has such drawbacks as cracking and warping.

## BIRCH LOGS



Birch Blocks ISO ·



Birch Logs ISO ·



Birch Logs ISO ·





Birch Peeler Logs ISO ·



Birch Peeler Logs ISO ·



Birch Process Feedstock ISO ·



Birch Logs



Birch



Birch

## BIRCH TIMBER



Birch Timber grade 0 · ISO



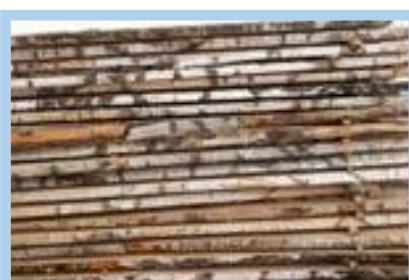
Birch Timber grade 0 · ISO



Birch Timber grade 1 · ISO



Birch Timber grade 1 · ISO



Birch Timber



Birch Timber



Birch Timber





# Pine

Pine is the most common wood used for joinery, construction and furniture industries, as well as designs under facing sliced veneer hardwood timber.



# PINE LOGS



Carpathian Pine Logs · SGS



Carpathian Red Pine Logs · SGS



Pine Logs Export · SGS



Pine Logs Export · SGS



Pine Logs · SGS



Pine Logs Grade 1 · SGS



Pine Logs · SGS



Pine Logs · SGS



Pine Logs · SGS



Pine Logs · SGS



Pine Logs · SGS



Pine Logs · SGS



Pine Logs · SGS



Pine Logs · SGS



Pine Logs · SGS





Pine Logs · SGS



Pine Regularized Logs · SGS



Pine Regularized Logs · SGS



Red Pine Logs · SGS



Red Pine Logs · SGS



Pine Logs Shipping · SGS

## PINE TIMBER



Pine Timber Test  
Measurement · SGS



S4S Pine Grade 0 · SGS



Pine Timber Grade 1 · SGS



Pine Brick 75x75 · SGS



Pine Brick 100x100 · SGS



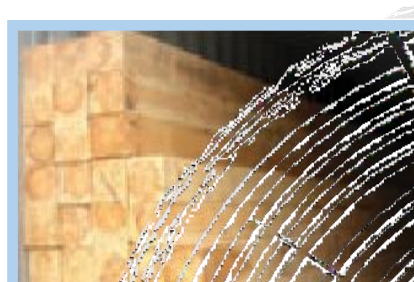
Pine Brick 120x120 · SGS



Pine Brick 125x125 · SGS



Pine Brick 125x125  
Grade 3-4 · SGS



Pine Brick 150x150  
Grade A-B · SGS





Pine Brick 150x150  
· SGS



Pine Brick 250x250  
· SGS



Pine Brick 300x300  
Length 4m · SGS



Pine Brick · SGS



Pine Brick Grade A-B  
· SGS



Pine Brick S4 Grade 0  
· SGS



Pine Brick 100x100  
· SGS



Pine Brick 150x150  
· SGS



Pine Brick 250x250  
· SGS



Pine Brick · SGS



Pine Brick · SGS



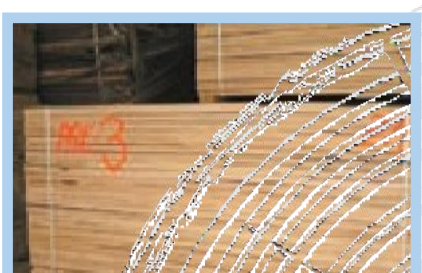
Pine Brick · SGS



Pine Timber Grades 2-3  
· SGS



Pine Timber · SGS



Pine Timber Grades B-C  
· SGS





Pine Timber Export · SGS



Pine Timber · SGS



Pine Timber Grade 1-2 · SGS



Pine Timber Grade 1-2  
· SGS



Pine Timber Grade 1-2  
· SGS



Pine Timber Grade 1  
· SGS



Pine Timber Grade 2-3  
· SGS



Pine Timber Grade 2  
· SGS



Pine Timber Grade 3-4  
· SGS



Pine Timber Grade A-B  
· SGS



Pine Timber Grade A-B  
· SGS



Pine Timber Grade A  
· SGS



Pine Timber Grade B-C  
· SGS



Pine Timber Grade B-C  
· SGS



Pine Timber Grade 2-3  
· SGS





Pine Timber Grade3-4 · SGS



Pine Timber Length 6m  
Grade 1 · SGS



Pine Timber Length 6m  
· SGS



Pine Timber S4 Grade 0  
· SGS



Pine Timber Grade A-B  
· SGS



Pine Timber Grade A-B  
· SGS



Pine Timber Grade A S4S · SGS



Pine Timber · SGS



Pine Timber · SGS



Pine Timber · SGS



Pine Fir Brick 200x200  
· SGS



S4S Pine Timber Grade 1  
· SGS



S4S Pine Timber Grade A-B  
· SGS



S4S Pine Timber Top Grade  
· SGS



S4S Pine Brick Grade A  
· SGS





# Spruce

Spruce – is a soft-wooded broadleaved species with expressive texture. It is used in joinery, furniture industry and construction.



## SPRUCE LOGS



Spruce Logs · SGS



Spruce Logs · SGS

## SPRUCE TIMBER



Preservative Treatment  
· SGS



Preservative Treatment Spruce  
Timber · SGS



Spruce Timber Grade A  
· SGS



Spruce Bricks Preservative  
Treatment 275x275 · SGS



Spruce Timber Grade 1-2  
· SGS



Spruce Timber Grade 1-2  
· SGS



Spruce Timber Length 9m  
Grade 2-3 · SGS



Spruce Timber Grade A  
· SGS



Spruce Timber Bricks  
200x200 · SGS





Spruce Bricks · SGS



Spruce Bricks 130x130 · SGS



Spruce Bricks length 6m · SGS



Spruce Timber Grade 1 · SGS



Spruce Timber rade 1-2 · SGS



Spruce Timber Grade 2-3 · SGS



Spruce Timber Grade 1 · SGS



Spruce Timber · SGS



Spruce Timber · SGS



Spruce Timber · SGS



Spruce Timber · SGS



Spruce Timber · SGS



Spruce Timber · SGS



Spruce Timber Export · SGS





# Cypress

Cypress has a dark tone color with a beautiful structure, used in the furniture industry, wood carving. It is a rare and valuable species.



Cypress Logs ISO ·



Cypress Logs



Cypress Logs



Cypress Timber



Cypress Timber



Cypress Timber





# Larch

Larch is a heavy-duty material among conifers, has reddish-brown wood of high strength (stronger than oak) and moisture resistance. All of Venice in Italy stands on stilts made of larch. Larch is used in the furniture and construction industries, for carpentry and mosaic work. Used for production of sliced and peeled veneer.



## LARCH LOGS



Carpathian Larch Logs · SGS



Fresh-cut Larch Logs ISO ·



Larch Logs · SGS



Larch Logs · SGS



Larch Logs · SGS

## LARCH TIMBER



Antiseptic Preparation  
Larch · SGS



Antiseptic Preparation  
Larch · SGS



Larch Floor Board  
Grade 1-2 · SGS



Larch Timber · ISO



Larch Timber Grade 0 · ISO



Timber S4S Grade 0 · SGS



Larch Timber Grade 1 · ISO



Larch Timber · ISO



Larch Timber S4S, S2S · ISO





# Cherry

Cherry is a breed that is rarely used in carpentry and joinery. Cherry has a very beautiful structure, a plurality of multi-colored streaks. It is often used for making ornaments and embossed finish furniture. Used for the manufacture of flooring and veneer sheets.



## CHERRY LOGS



Cherry Logs ISO ·



Cherry Logs ISO ·



Cherry Logs ISO ·



Cherry Peeler Logs ISO ·

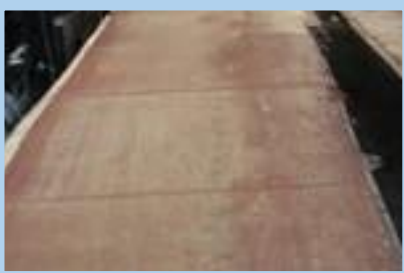


Cherry Peeler Logs ISO ·



Cherry Veneer ISO ·

## CHERRY TIMBER



Cherry Timber ISO ·



Cherry Timber ISO ·



Cherry Timber ISO ·



Cherry Timber ISO ·



Cherry Timber ISO ·



Cherry Timber ISO ·





# Nut

A long time ago, walnut wood is widely used for furniture production. Because of its beautiful texture, it is used for interior decoration. Manufacturing rifle lodges and various decorative items. Very much appreciated nutty sliced veneer, attracts texture and color. Also nut is used for lining millwork and building products, get the best grades of plywood.



## NUT LOGS



Black Nut Logs ISO ·



Nut Logs ISO ·



Nut Logs ISO ·



Nut Logs ISO ·



Nut Logs ISO ·

## NUT TIMBER



Nut Timber · ISO



Nut Timber · ISO



Nut Timber · ISO



Nut Timber · ISO



Nut Timber · ISO





# Cedar

Cedar has an excellent color with different color tones, which depend on the place of growth of the tree. Cedar is used mainly for decoration in shipbuilding (yachts, liners). Good material for carving. It is used in the construction industry.



## CEDAR LOGS



Bark Cedar Logs Grade 0-1  
· ISO



Cedar Logs · ISO



Cedar Logs · ISO



Cedar Logs · ISO

## CEDAR TIMBER



Cedar Timber Test  
Measurements · SGS



Cedar Timber Grade 0-1  
· ISO



Cedar Export · SGS



Cedar plywood · ISO



Cedar Timber · ISO



Cedar Timber · ISO





# Fir

Fir is a soft wood used in construction, pulp and paper industry as a technological raw material.



## FIR LOGS



Fir Logs · SGS



Fir Logs · SGS



Fir Logs · SGS



Fir Logs · SGS



Fir Logs · SGS

## FIR TIMBER



Export Fir · SGS



Fir Brick 120x120 · SGS



Fir Brick Grade 3 · SGS



Fir Timber · SGS



Fir Timber · SGS





# Beech

Beech is hardwood, not inferior in strength to oak. It is used in the furniture industry and joinery. Hygroscopic. Production of parquet, manufacturing of sliced veneer for plywood and veneer furniture. It refers to the valuable wood. It is used for the manufacture of handrails and staircases.

# BEECH LOGS



Beech Logs grade A · ISO



Beech Logs · ISO



Beech Logs · ISO



Beech Logs · ISO



Beech Logs · ISO



Beech Logs · ISO



Beech Logs · ISO



Beech Logs · ISO



Beech Logs · ISO



Beech Logs · ISO



# BEECH TIMBER



Beech timber grade 1-2 · ISO



Beech timber grade 1-2 · ISO



Beech timber grade A · ISO



Beech timber · ISO



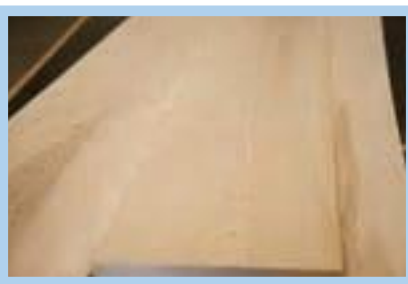
Beech timber · ISO



Beech timber



Beech timber



Beech timber



Beech timber



# Maple

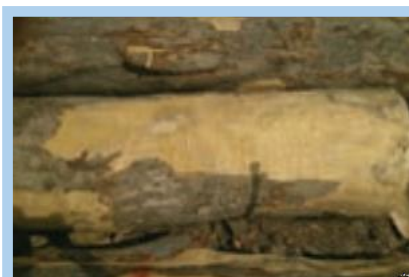
Maple is a strong, firm, light yellow wood. Maple is used in the furniture industry & joinery for the manufacture of flooring, veneer sheets. Widely used in arts & crafts.



Maple Logs ISO ·



Maple Logs ISO ·



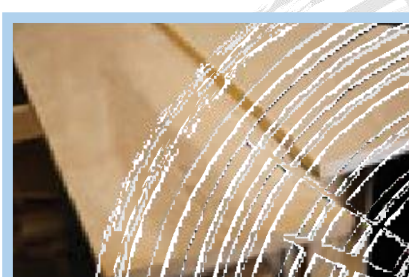
Maple Logs ISO ·



Maple Logs ISO ·



Maple Logs ISO ·



Maple Timber





# Linden

Linden is a rare soft-wooded broadleaved species, prized for furniture, decoration. Linden has a hard structure that is also used in shipbuilding. Has a light tone color texture.

## LINDEN LOGS



Linden Logs · ISO



Linden Logs · ISO



Linden Logs · ISO



Linden Logs · ISO



Linden Logs · ISO

## LINDEN TIMBER



Linden Timber · ISO



Linden Timber KD · ISO



Linden Timber · ISO



Linden Timber · ISO





# Aspen

Aspen is used for the manufacture of plywood and particleboard fiberboard, construction and performance of joinery.

# ASPEN LOGS



Aspen Logs · SGS



Aspen Logs · SGS



Aspen Logs · SGS



Aspen Logs · SGS



Aspen Logs · SGS

# ASPEN TIMBER



Aspen Timber · SGS



Aspen Timber · SGS



Aspen Timber · SGS





# Ash

Ash is one of the most beautiful wood texture. Used in carpentry for furniture, stairs, railings, sliced and peeled veneer, parquet manufacturing of plywood.



Humidity Measuring · SGS



Ash Timber · ISO



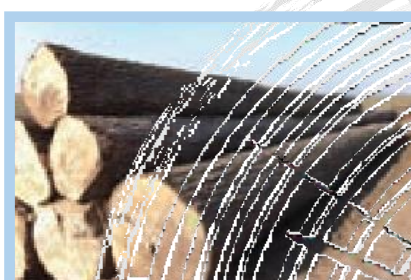
White Ash Timber Grade 0 · ISO



Ash Timber · ISO



Ash Timber Grade 1-2 · ISO



Ash Logs



# ASH LOGS



Ash Blocks



Ash Blocks



Ash Logs Grade A ISO ·



Ash Logs Grade A-B ISO ·



Ash Logs · SGS



Ash Logs ISO ·



Ash Logs ISO ·



Ash Logs ISO ·



Ash Peeler Logs ISO ·



Ash Peeler Logs ISO ·



White Ash Logs ISO ·



White Ash Logs Grade A-B ISO ·



White Ash Logs ISO ·



White Ash Logs ISO ·



White Ash Logs ISO ·





# Alder

Alder is a soft-wooded broadleaved species used for building houses and furniture, as a finishing material. Manufacture of veneer sheets, plywood, MDF.



Black Alder Logs ISO ·



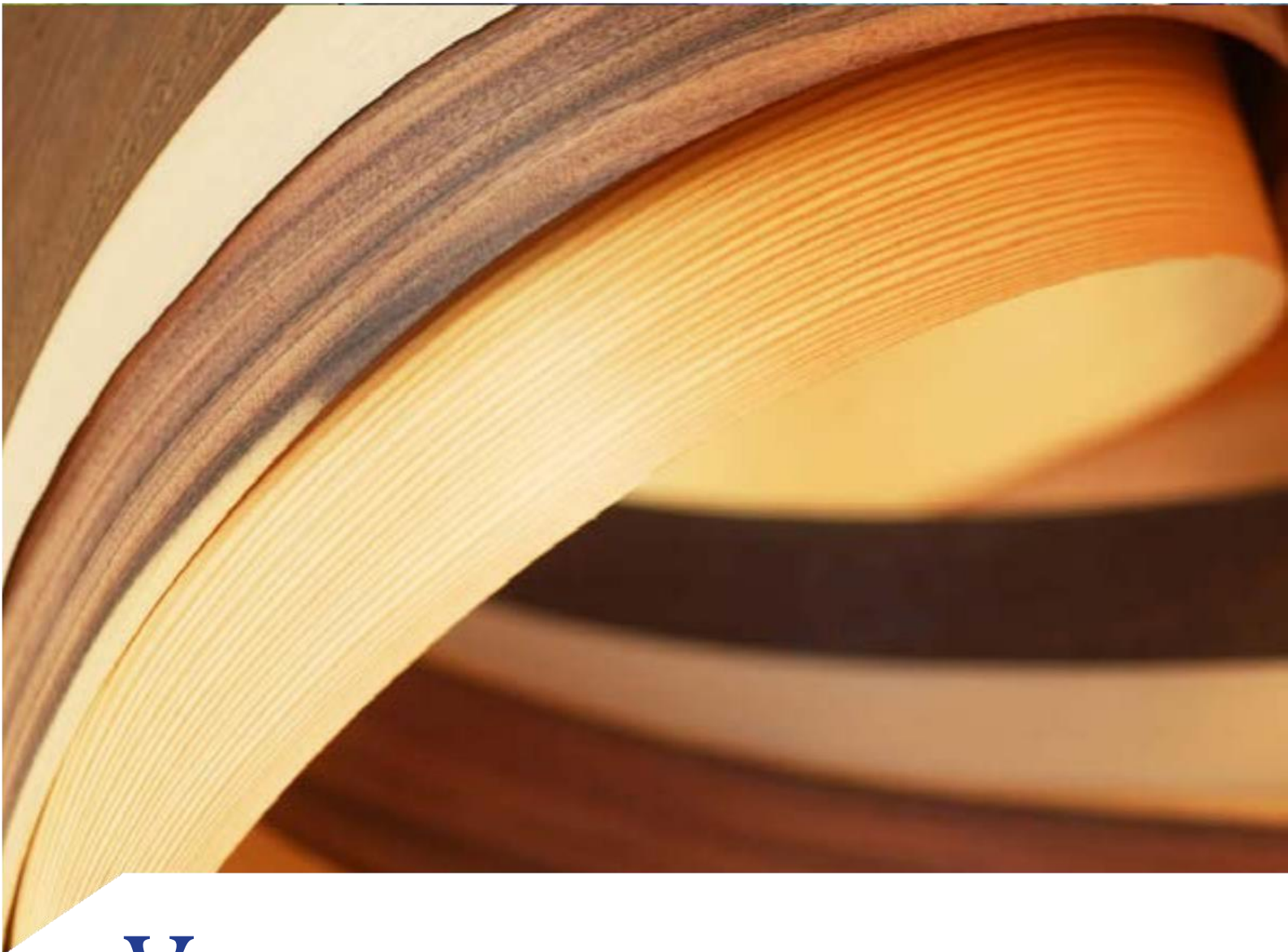
Alder Logs ISO ·



Alder Logs ISO ·

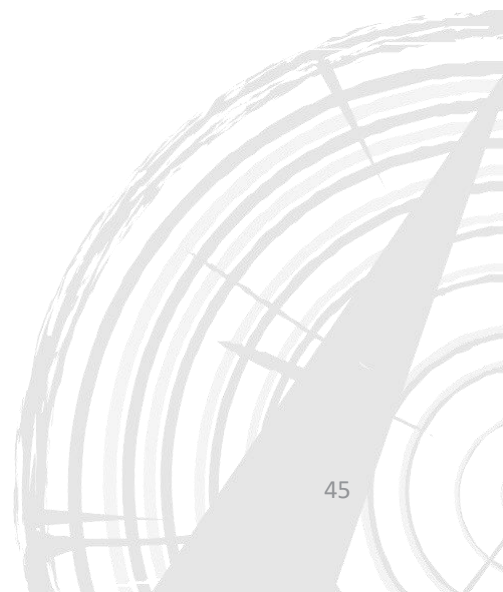


Alder Timber ISO ·



# Veneer

Veneering is a connection surface of wood, not having a high decorative qualities, with natural veneer of fine wood veneer or “fine-line». Thanks veneering, the product becomes more beautiful appearance, increases its strength. Decorative veneered panels, also known as plywood, made up of two main layers - sheet chipboard or MDF and veneer glued to it.





# **VENEER**



A Grade Poplar Coore  
 Veneer Ash Tree



AAA Grade Cherry  
 Good Quality Veneer



AAA Grade Merbal Veneer



AAA Grade Red Oak  
 Wood Veneer



AAA Grade Veneer  
 High Quality Nut



AAA Grade Veneer  
 High Quality Red Wood



Natural Cedar Veneers



Oak Wood Veneer Sheets



Red Oak Wood Veneer



Maple Veneer



Beech Veneer



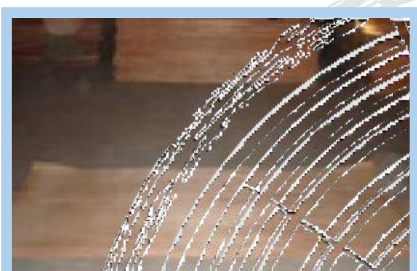
Natural Beech Veneer



Natural Beech Veneer



Natural Cedar Veneer



Natural Cherry Veneer



Natural Fir Veneer



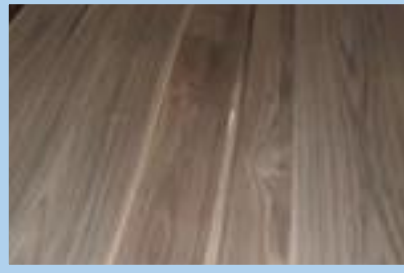
Natural Nut Veneer



Natural Redwood Veneer



Natural Redwood Veneer



Natural Veneer



Natural Veneer



Natural Veneer



Natural Veneer



Natural Veneer



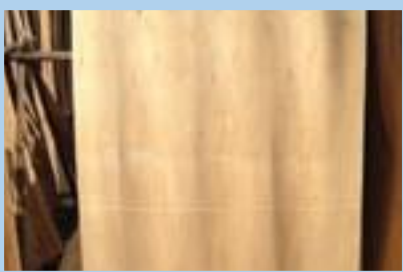
Natural Veneer



Natural Veneer



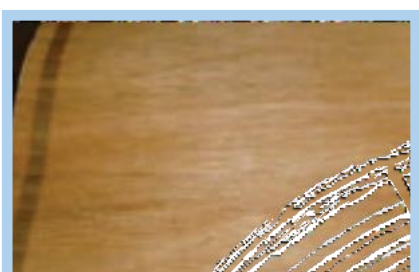
Natural Veneer



Natural Veneer

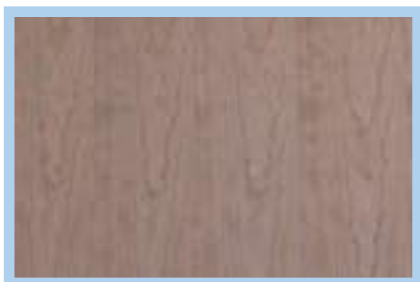


Natural Veneer



Natural Veneer





Natural Veneer



Natural Veneer



Natural Veneer



Natural Veneer



Natural Veneer



Natural Veneer



Natural Veneer



Natural Veneer



Natural Veneer



Natural Veneer



Natural Veneer



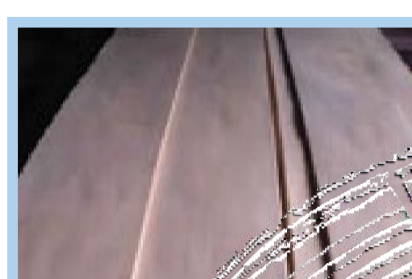
Natural Veneer



Natural Veneer



Natural Veneer



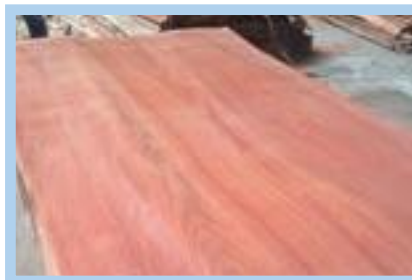
Natural Veneer



Natural Veneer



Natural Veneer



Natural Veneer



Natural Veneer



Natural Veneer



Natural Veneer



Natural Veneer



Natural Veneer



Natural Veneer





# Pallet billet

Pallet billet is used for production pallets, packaging containers. As the raw material used: birch, fir, alder, aspen, fir and pine.

# PALLET BILLET



Pallet Billet · SGS



Pallet Billet Grade 1 · SGS



Pallet Billet Grade 1 · SGS



Pallet Billet Grade 1-2 · SGS



Pallet Billet Grade 2 Pine  
· SGS



Pallet Billet Spruce Grade 2-3 ·  
SGS



Pallet Billet · SGS

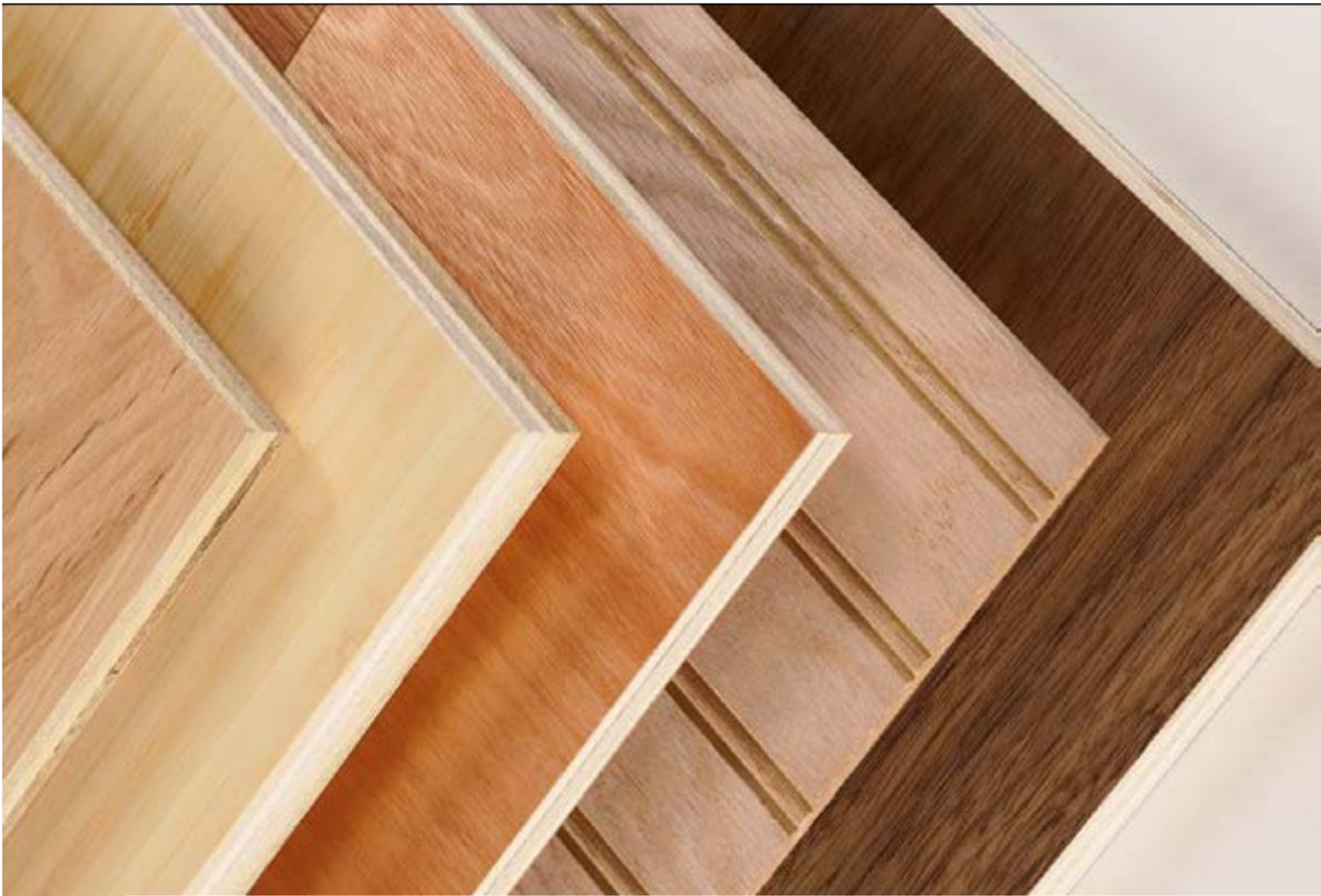


Pallet Billet · SGS



Pallet Billet · SGS





# Plywood

**MDF (Medium Density Fiberboard)** is an environmentally friendly material. The main binder acts are not synthetic but natural material. Constitute the basis of MDF dried wood fibers treated with special binders. MDF is tolerating to differences of humidity, not swell or warp. They have high mechanical strength, which allows the use of MDF for furniture, doors, wall panels and others. Another feature of the plates they are resistance to various fungi and microorganisms, which make products from MDF hygiene and safety in the home.

**Particle Board (chipboard)** is the most popular among the plate materials. Made from low-value wood both softwood and hardwood. Due to the special additives, particleboard is a strong and durable material. Notch plate devoid scratches, stains, and their smooth edges, thickness from 10 to 26 mm. Such material ready for furniture production. Another important property of chipboard is ease of processing: the plate well to sawing, drilling, planing, easily glued and painted; and on some physical and mechanical properties of this material is superior to natural wood: less plate swell from moisture, less flammable, have good heat and sound insulating properties. It only remains to add that such a

high quality particleboard meets the low cost.

**Water resistant plywood** is an eco-friendly high-quality material with a high level of water resistance. This brand produced by gluing plywood interperpendicular veneers of different kinds of wood (birch, alder or combination) using formaldehyde resins. The multilayer structure with multi-directional fibers of wood in different layers of the material provides resistance to deformation, and safe for human adhesive composition forms a final product, characterized by high durability and quality. As a result, in addition to affordable prices, among the main advantages of water resistant plywood:

Thanks to the universal indicators of reliability and durability, water resistant plywood has a wide scope of its use. It is equally successfully used for internal and external works, aircraft modeling and furniture industry, in the field of outdoor advertising and frame construction, furnishing floor indoors and as supplementary material for the manufacture of boats.



Ash Furniture Plywood  
1250x1250, 1525x1525,  
1250x2500



Beech Multilayer Plywood  
1250x1250, 1525x1525,  
1250x2500



Cedar Furniture Plywood  
1250x1250, 1525x1525,  
1250x2500



Furniture Multilayer Plywood  
1250x1250, 1525x1525,  
1250x2500



Spruce Plywood  
1250x2500, 1250x1250

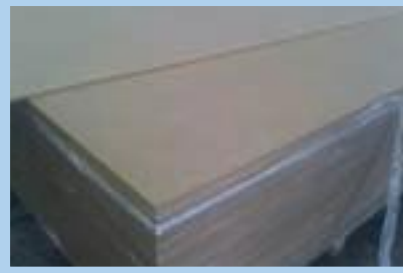


Cherry Furniture Plywood  
1250x2500





Cedar Plywood  
1250x2500



Particle Board  
1250x1250, 1525x1525,  
1250x2500



Oak Furniture Multilayer  
Plywood



Aspen Plywood



Beech Plywood



Nut Multilayer Plywood



Packaging Department



Packaging Department



Packaging Department



Plywood Production



Cherry Medium Density  
Fibre Board



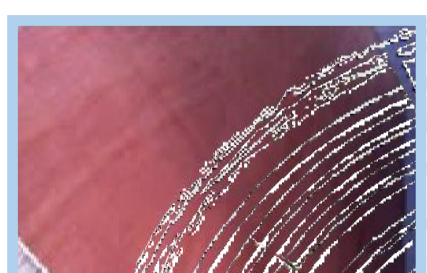
Medium Density  
Fibre Board



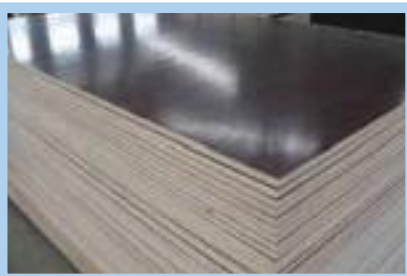
Red Ash plywood



Birch plywood



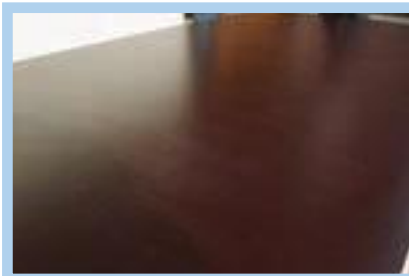
Cherry plywood



Water Resistant Multilayer  
Plywood 1250x1250,  
1525x1525, 1250x2500



Water Resistant Multilayer  
Plywood 1250x1250,  
1525x1525, 1250x2500



Water Resistant Multilayer  
Plywood



Water Resistant Plywood



White Ash Medium Density  
Fibre Board



White Furniture Ash Medium  
Density Fibre Board



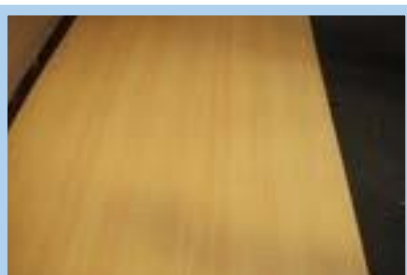
White Birch Multilayer  
Plywood 1250x1250,  
1525x1525, 1250x2500



White Horn-beech Plywood  
1250x1250, 1525x1525,  
1250x2500



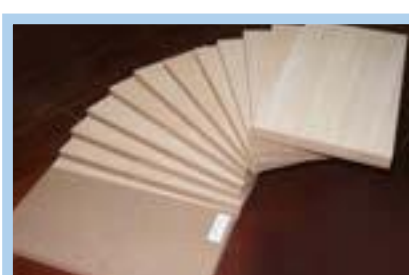
White Poplar Plywood  
1250x2500



Yellow Ash Medium Density  
Fibre Board 1250x2500,  
1250x1250



Red Oak Medium Density  
Fibre Board



Red Oak Medium Density  
Fibre Board





# Parquet

Parquetry is a geometric mosaic of wood pieces used for decorative effect. The two main uses of parquetry are as veneer patterns on furniture and block patterns for flooring. Parquet patterns are entirely geometrical and angular—squares, triangles, lozenges. The most popular parquet flooring pattern is herringbone.

# SAMPLES OF PARQUET



Different Types of Parquet



Laying the Parquet Floor



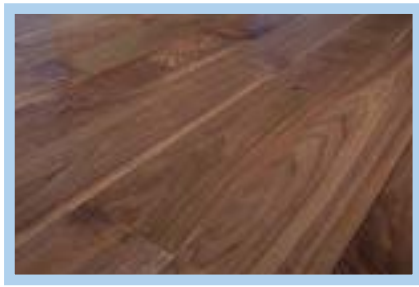
Laying the Parquet Floor



Walnut Parquet



Walnut Parquet



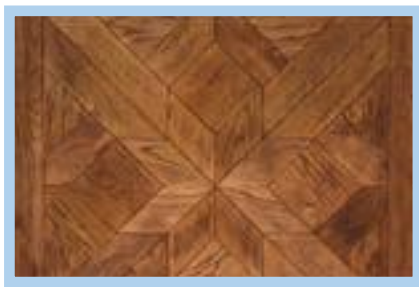
Walnut Parquet



Walnut Parquet



Walnut Parquet



Walnut Parquet



Alder Parquet



Ash Parquet



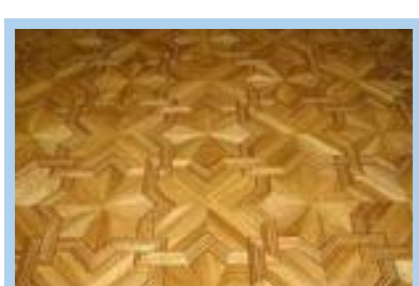
Ash Parquet



Beech Parquet



Beech Parquet



Beech Parquet





Aspen Parquet



Birch Parquet



Cherry Parquet



Maple Parquet



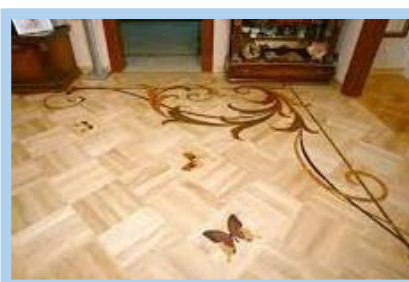
Maple Parquet



Oak Parquet



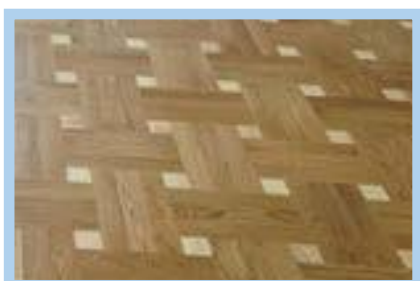
Oak Parquet



Oak Parquet



Oak Parquet



Oak Parquet



# Transportation

Bitimpex Anstalt LTD organize the transportation of its products by maritime, rail or ground transportation, sometimes container transportation.







# Contact us



## «BITimpex Anstalt» British Virgin Islands

🏠 British Virgin Islands, Tortola Road  
Town, P.O. Box 146 Trident Chambers  
☎ +44 7367 652684  
+44 7366 211175  
@ limzpg@gmail.com  
💻 www.bitimpex-zs.com



## «BITimpex Anstalt LTD» UAE

🏠 Dubai, United Arab Emirates  
☎ +90 542 888 02 30  
@ limzpg@gmail.com  
💻 www.bitimpex-zs.com



## «BITimpex Anstalt LTD» Switzerland

🏠 Zurich, Switzerland  
☎ +357 951 91 119  
+41 767 739 030  
@ pueblosbit@gmail.com  
💻 www.bitimpex-zs.com



## «BITimpex Anstalt LTD» Russia

🏠 Russia  
☎ +7495 224 23 27  
+7365 229 20 38  
@ limzpg@gmail.com  
💻 www.bitimpex-zs.com

All products of Bitimpex ANSTALT LTD are certified in accordance with the standards of the ISO and ISO. And there are certificates of laboratory tests by independent surveyor SGS and the Chamber of Commerce and Industry of Russian Federation.

